

Name:

ID:

Geb.: 20.10.1981

Alter: 43

Unters.-Dat 30.11.2024

Geschlecht: Weiblich

Auge: Rechts

Bemerkung:



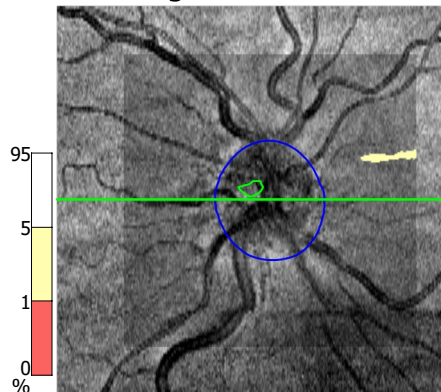
R

30.11.2024 12:32:28 QI: 9

PAPILLE | EINZELN

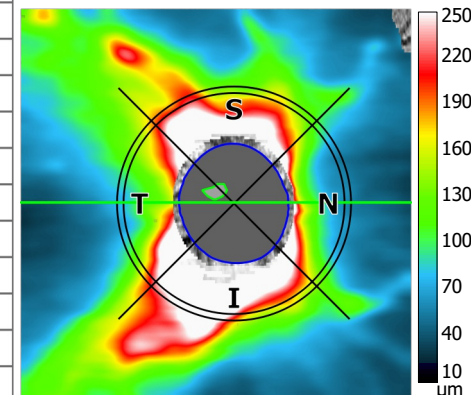
3D 6x6 mm

### NFL Vergleich

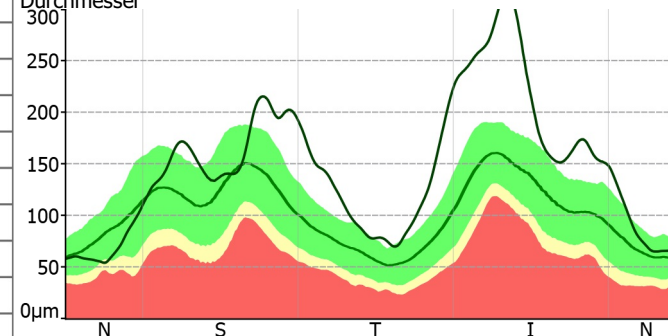


Fläche		Norm
Disc [mm <sup>2</sup> ]	2,40	
Cup [mm <sup>2</sup> ]	0,06	0,00 - 0,95
<b>Rand [mm<sup>2</sup>]</b>	<b>2,34</b>	<b>0,88 - 1,87</b>
<b>Cup/Disc</b>	<b>0,02</b>	<b>0,00 - 0,46</b>
Volumen		
Cup [mm <sup>3</sup> ]	0,00	0,00 - 0,25
<b>Rand [mm<sup>3</sup>]</b>	<b>1,03</b>	<b>0,12 - 0,51</b>
Tiefe		
Ø Cup Tiefe [mm]	0,03	0,00 - 0,30
Max. Cup Tiefe [mm]	0,06	0,00 - 0,58
Durchmesser		
Disc horizontal [mm]	1,70	
Disc vertikal [mm]	1,80	
Ø Disc [mm]	1,75	
Cup horizontal [mm]	0,39	
Cup vertikal [mm]	0,28	
Ø Cup [mm]	0,34	
C/D horizontal	0,23	
C/D vertikal	0,16	
Disc V/H	1,05	
Cup V/H	0,73	
R/D Minimum	0,19	
Randverlust [°]	-	
DDLS	4	

### NFL Dicke



Ring Durchmesser 3,40 mm Ring Breite 0,10 mm



NFL average [µm]	144	68 - 131
Superior hemisphere [µm]	130	
Inferior hemisphere [µm]	158	
Std.-Abweichung [µm]	66	

